



Greenleaf

Volume 14 Issue 4

November, 2011

PRESIDENT'S MESSAGE

SIX MONTHS TO MAKE A PUMPKIN PIE

Thanksgiving is just around the corner. Usually this holiday is celebrated in the same fashion year to year and each one becomes hard to remember on its own. One special Thanksgiving will always be treasured for me and my family because gardening saved the holiday for us that year.

The year was 1984 and we were living in Secunda, South Africa. It was a small rural town on the outskirts of a huge coal gasification plant where my husband Greg worked. No family, no phone, no newspaper, and having English TV only every third day made for a hard transition for a native Texas gal with strong family ties.

All of us company wives would get together once a week for cross-stitching, commiserating and trying to help each other over the hardships. We called it the stitch & b*tch! In the month of June, which is fall there, I was disappointed to learn from the ladies that there were no orange edible pumpkins to be found in South Africa. They did have white pumpkins though. Well, we were not going to have a white pumpkin pie for Thanksgiving. That was just taking the ex-pat experience too far in the wrong direction!



Thanksgiving, Secunda, South Africa 1984

I wrote Flo, my mother-in-law, a snail mail letter which took a month to get back to the US. In the return mail, she sent me a packet of orange pumpkin seeds in a care package that took a month to get back to me. I grew and nurtured those pumpkin plants through the months of August, September and October (late winter and spring). Only the most bedraggled pie pumpkins survived, but I used them to bake a traditional orange pumpkin pie. That was a pumpkin pie truly made from scratch because it was 6 months in the making! To this day, I still marvel at the ease of simply opening a can of Libby's pumpkin for our pies today. Happy Thanksgiving, everyone!

Continue on column 2



CHRISTMAS PARTY LUNCHEON

By Donna Romaine

Our annual Christmas Luncheon is on Tuesday, December 13 from 11 a.m. to 1 p.m. at the Knights of Columbus Hall. There is no cost to attend - just bring a tasty dish to share and a \$5.00 unwrapped ornament for our ornament exchange game. If you would like to come celebrate the season with us at the Luncheon, please sign up at the Social section during the November meeting or contact Donna Romaine 281 494-2416 by December 6th.

Continued from column 1

And now, let's get to our garden club activities!

Join us for Tuesday's general meeting to hear our featured speaker Keiji Asakura discuss Oriental garden design.

Our Christmas luncheon will take place on Tuesday, December 13, the second Tuesday of the month. Please sign up at the November meeting, since that will be your last chance. Each table will be decorated in a holiday theme by club members this year, so we would like you to consider decorating one table. Each attendee will also bring a covered dish and one unwrapped Christmas decoration for our traditional Christmas game. Guests are welcome too!

The last field trip of the 2011 year will be held on Tuesday, November 22. Our destination is the Katy Prairie Conservancy. Jaime Gonzales, education manager for the Conservancy and speaker for our January, 2011 meeting has invited us to tour his facility and to even help a little in their nurseries. Lunch (optional) will be at a tea room in Katy.

Please note that reservations are required for all club events: workshops, field trips, Christmas luncheon and the May brunch. You may sign up at the general meeting before the event at the appropriate table and a committee member will be sitting there happy help you.

Happy gardening!

Terri

2011-2012 Club Officers

President	Terri Hurley
1 st vice president <i>Programs</i>	Kathy Hradecky
2 nd vice president <i>Membership</i>	Elisabeth Jones Carrie Sample Emilie Wilson
Recording Secretary	Sherrie Strickland
Treasurer	Deborah Birge
Parliamentarian	Mary Ellen Twiss



Dues for SLGC are payable each spring, \$30 for the following year. New members joining June 1 - December 31 shall pay \$30 for the current year. New members joining January 1 - March 31 shall pay \$20 for the current year. For new members joining in April, dues are \$30 and apply to the following garden club year. Each member receives a monthly newsletter and copy of the club yearbook.



The Sugar Land Garden Club of Sugar Land, Texas, publishes the Greenleaf Newsletter monthly except June, July, & December.

Editors
Lan Shen
Jennifer Washam

DEAD LINE IS THE SECOND TUESDAY OF PUBLICATION MONTH

Contact for articles and contributions:
Shen.acmn@aol.com or 713-771-1415

SLGC CORRESPONDENCE

Get-well card was sent to Jeanette Elliff, who had a shoulder replacement.

Sympathy card was sent to Sylvia Alewine whose son-in-law, Evan Wahl, passed away suddenly of a heart attack.

Sympathy card was sent to Judy Garrison, whose son passed away.

Sympathy card was sent to Terri Schwab, whose brother passed away.

Thank you card was sent to Ella Albin for the many bulbs she donated to October's plant swap.

KEIJI ASAKURA - NOVEMBER SPEAKER

How to Create an Oriental Garden

By Kathy Hradecky



Keiji Asakura is the featured speaker of the November 15 general meeting of the SLGC. Keiji has designed some of the most beautiful oriental gardens in the Houston area and he will inspire us to create our own! He is a principal of the Asakura Robinson Company and has over 33 years experience in urban design, landscape architecture, and community planning throughout the US and internationally. He has served on numerous boards and commissions in Houston and has taught in the landscape architecture departments of the University of Houston, Louisiana State University, and Texas A&M University.

FIELD TRIP

By Mary Bates

Join us on Tuesday, November 22 for a look at the workings of Katy Prairie Conservancy. We will visit their field office and plant nursery and may get to plant some of their grass seed collections. We will see their experimental plant plots that look healthy in spite of a brutal summer. From there we travel to their wildlife viewing platform. Hopefully, we will also be able to make a trek to the dam area, where there is more wildlife. Bring binoculars, boots (recommended), and a snack. Lunch will be at a tearoom in downtown Katy. You will need to make your lunch selection at the general meeting or contact Mary Bates by Friday, November 19. Antique shopping afterwards is optional.

Check in for carpooling at 7:30 a.m. at the Knights of Columbus Hall, where we have permission to leave our cars. We will leave at 7:45 a.m. If you have any questions, please contact Mary Bates at 979-255-0350 or nomorebates@yahoo.com.



The Matt Cook Wildlife Viewing Platform. Photo from the Katy Prairie Conservancy Observer, February, 2011. To get the KPC newsletter monthly in your email, contact info@katyprairie.org

October field trip photo by Kathy Hradecky. See more photos of that trip at [Current Month's Greenleaf Photos](#)





HORTICULTURE

By Paula Goodwin

Gardening is probably the last thing on anyone's mind right now, but here are some leftover notes we accumulated during this past year.

Plants from the grocery store:

Avocado, lemon, pomegranate, papaya, mango - try starting any of these seeds on a sunny window ledge this winter and see what sprouts. Try also potato tuber with at least one or two eyes, garlic cloves, and pineapple top.

Miscellaneous gardening tips:

- Use plastic grocery bags for temporary pots for moving and trading plants.
- To make a wall pocket, step on the end of a coffee can. Crimp with pliers and punch two holes near the top for wire hanger and at sides for drainage. Paint and decorate (or not).
- Use three upside-down tiny clay pots for feet to keep your plant container from staining your patio or deck. Or use these little pots for candle votives.
- Use junk mail envelopes to save seeds.
- Use an old sock to dust plants with any kind of powder, for example, fungicides.

A person can go to Peru, South America, and does not even have to change the time on one's watch, but there will be a difference in seasons. In just about seven hours you can go from fall in Texas to spring in Peru. It was slightly confusing to me to see new corn growing in the fields in October, when we were there a couple of weeks ago.

When traveling I tend to botanize which means that plants are also an attraction wherever I go. There was one small tree that was growing outside our hotel's dining room which I had never seen or even heard of. They called it the tree tomato (*Cyphomandra betacea*). It looked as though it had been hung with giant Christmas lights, the bulb type. The chef was kind enough to go out with his flashlight, pick a couple, sliced them, and added them with our appetizers. These tree tomatoes were not very tasty, although the Peruvians make sauces and juice with them. It is also called the amarillo tree.

Be sure to use your new City of Sugar Land's composting bin to get rid of grass clippings and other green refuse. And before you toss out your old trashcans, know that you can still use them for dispose of cut up branches, twigs, etc. Or better yet, make a compost bin out of it if it already has holes in the bottom. Tuck it away in an out-of-sight corner of your yard and toss into it all your garbage to make wonderful compost for your flowerbeds. Check out the [City's website](#) to get information.

Happy Holidays!

WORKSHOP

By Brenda Webb



Our next craft workshop will be on February 7, when Terri Hurley will teach us to make herbal bath salts. A warm tub of water filled with the scent of these herbal bath salts can be soothing, invigorating, and even anti-aging. Sign up will be at the January SLGC meeting.

As we celebrate the holidays, please remember to save your cork wine corks for a future craft project. We will collect these at SLGC meetings.



October workshop participants holding their hand-made canvas bags. Sent by Delores Reeves.

More photos sent by Delores Reeves of the workshop are at [Current Month's Greenleaf Photos](#).

SLGC PHOTOS

Randy Kozlovsky, professional photographer and husband of SLGC member Marian, posted his wonderful GAPS photos on his website, <http://ohanaphotos.zenfolio.com/>. Click on the photograph above the words SLGC-9-24-2011+. Click on Slideshow+ on the upper right corner. Then you can either wait until each photo appears automatically, or use the right or left arrow (bottom right corner) to go to the next photo. Randy's photos of other SLGC events (in other albums) may also be view from the website.

SLGC photos submitted by members are posted in the [Picasa Web Albums - mySLGCphotos](#). Photos submitted for the current month, are in the album [Current Month's Greenleaf Photos](#). The following month, they are moved into another album, mostly to the album titled **SLGC-2011-2012**. All photos in this website may be downloaded and printed.

Members wanting to submit their own photos of SLGC events may contact Lan Shen for the email address to which the photos are to be sent. Please be aware that all submitted photos are viewable by anyone on the internet. Although we placed restrictions on the use of these photos, there is no way to enforce these restrictions.

GARDEN CLUB PERSONALITY

By Marsha Smith



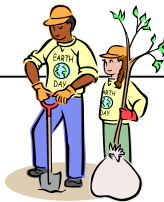
Hello everyone, my name is Marsha Smith and I have been a member of SLGC for 13 years. My family moved to Sugar Land in 1954 and the first person my mother met was a member of the garden club. Mother was welcomed to Sugar Land and invited to a meeting, and of course she joined. How different it was in those days . meetings held in private homes, ladies in their suits and heels, having refreshments on silver trays and fine china, and members taking turns giving the monthly program!

I had always known I would join the garden club when I quit working. I spent 21 years in sales and product management in industrial electronics and then two years living in England before I had the opportunity. While I knew a bit about plants and gardening in general, I soon realized how much I **did not** know. The excellent programs and field trips and workshops have helped me learn such a variety of things. And where else could you meet such a diverse and fascinating group of people? It has been a great experience.

While in the club I have served in a number of positions . Publicity co-chair, Membership co-chair, Database chair, Yearbook chair, and President. I am also involved in the Fort Bend County Historic Commission's Oral History project and am a docent for the Sugar Land Heritage Foundation. I enjoy reading, needlework, cooking, and gardening among other things.

ARBOR DAY CELEBRATION

By Leslie Niemand



Please plan to stay after our monthly meeting on January 17 to attend the club's 2012 Arbor Day celebration. We will dedicate the Arbor Day trees we have gifted to the City of Sugar Land. It is important that we, as club members, take this opportunity to show our support for the City of Sugar Land. Sugar Land Parks and Recreation officials will be attending. The location of the Arbor Day celebration will be announced later.

WELCOME NEW MEMBERS

Vicki Fordyce
Charlotte Guettner
Diane Meyer
Betty Prentiss
Robin Rettew



BUTTERFLY GARDEN

By Evelyn Coe

Thank you to Don and Elisabeth Jones for donating compost for the butterfly garden. The plants will benefit greatly from the compost.

The Sugar Land Garden Club planted and maintains the butterfly garden at the Sugar Land Branch Library at 550 Eldridge Road. Please consider joining the fun one or two times this year. The weeding, pruning, and planting take about one hour once a month. **The next butterfly garden workday is Thursday, November 17** at 8:00 a.m. There will be no butterfly workday in December. For more information, contact Evelyn Coe at evelyncoe@earthlink.net or 281-565-9813.



Photos by Elisabeth Jones

BROOKWOOD COMMUNITY WORK DAY

By Diana Miller

The Brookwood Community work day is on December 1. If you have never visited Brookwood, it is a very special place. In addition to the residential facilities at Brookwood, the campus is comprised of thirty-nine commercial greenhouses, horticultural offices, a garden statuary manufacturer, one of Brookwood's three retail centers, and The Cafe at Brookwood. Our work day is on the day before Brookwood's big holiday open house weekend. The gift shop should be brimming with holiday gifts and decorations. It's the perfect time to get some shopping done once our work shift is over!



We will be departing Sugar Land at 9:30 a.m. and will work from 10:30 a.m. to 2:30 p.m. with 30 minutes for lunch. Our work is often in the greenhouses so gardening attire is definitely a must! We will be having boxed lunches from the Brookwood cafe in the

beautiful outdoor garden area, weather permitting. No more than **6 volunteers** may participate so be sure to sign up early. You may RSVP to me at dmiller@realtor.com.

EVENTS: SUGAR LAND & HERB

By Marsha Smith



FARMERS MARKET AT IMPERIAL. The market has been such a success, it has been made year-round! Presented by the Fort Bend Chamber of Commerce, it will run every Saturday from 9:00 a.m. to 1:00 p.m., rain or shine, at 198 Kempner St. (just north of Highway 90 and Brooks Street).

Visitors can purchase local cheeses, fresh baked goods, jam, honey, fresh-cut flowers and more. Enchanted Gardens nursery design professionals will be on hand to answer landscaping questions and offer whimsical holiday gifts for the gardener in the family. Live music, cooking demonstrations by area chefs, children's activities and appearances by the Sugar Land Skeeters mascot are planned, turning this traditional Farmers Market into a festival of food and fun.

SUGAR LAND HERITAGE HIKE. Wouldn't it be nice to spend a leisurely Saturday on a walk through a leafy historic neighborhood, while learning a little bit about Sugar Land history? Join the [Sugar Land Heritage Foundation](#) as they present a monthly [Heritage Hike](#) each **second Saturday of the month**. The walk is about 1-1/2 miles and takes one and one-half hours. The next two tours are December 10 and January 14. Costs are \$10 for adults, \$5 for teens, and free for children under 12. The Heritage Foundation is a 501(c)3 organization and all proceeds go to the Heritage Foundation. For tour reservations, contact Eleanor Barton at 281-494-0261. Special group tours may be scheduled during the week. Contact Marsha Smith at 281-491-1621 or msmith@hal-pc.org for more information on special group tours.



URBAN HARVEST FARMERS' MARKET at Sugar Land Town Square. **Thursdays, 4:00 p.m. to 7:00 p.m.** at 2711 Town Center Boulevard North. Urban Harvest FarmersMarket at Sugar Land Town

Square will include farm-fresh produce, locally prepared foods to take away and plenty of delicious hot and cold food items to enjoy right at the market as well as monthly chef demos.



KEEP SUGAR LAND BEAUTIFUL (KSLB) celebrates America Recycles Day at Whole Foods in Sugar Land on Tuesday, November 15, from 11:00 a.m. to 2:00 p.m. They will answer your recycling questions and collect gently used books for the Literacy Council of Fort Bend County. Find the answer to questions such as *Where can you recycle your electronic equipment?*, *What should you do with leftover paint or cooking oil?*, etc.

CHRISTMAS DONATION FOR THE FORT BEND WOMEN'S CENTER

The Fort Bend Women's Center serves the needs of abused women and their children. The Sugar Land Garden Club makes a donation to the center every year. Last year, the Women's Center requested a cash donation to buy much needed nonperishable foods.

This year the center has asked that we again make a cash donation for nonperishable foods. According to the director of the center, the holidays mean a greater need for food due to the fact that the children are out of school.

Donations of cash or checks can be made at the November 15 general meeting or at the Christmas luncheon. **Make checks out to SLGC and write Women's Center on the memo line. The deadline for donations will be December 13, 2011** at our Christmas luncheon.

Look for the **Community Service table at the meetings** and you can give your donation to either Debe Fannin or Beth Phelps. If you are unable to make the meetings, you may send your checks to our treasurer Deborah Birge. Her address is in the yearbook.

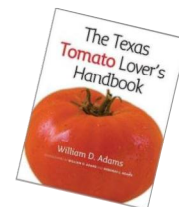
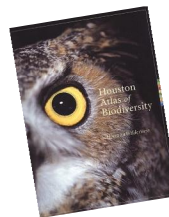
If you have any questions, contact Debe Fannin at debe23@aol.com.

LIBRARY DONATIONS

By Kathy Hradecky

Sugar Land Garden Club purchases and donates gardening, birding, and nature books for the Fort Bend County Library System, to be shelved at the Sugar Land Branch Library. This year we are going to **emphasize** children's books. If you have any titles (adult or children) to suggest, please send them to Kathy Hradecky (kathy-fh@comcast.net) or Lan Shen (shen.gcmn@gmail.com). **We would like to make our purchases by March of 2012, so please get your suggestions in as soon as possible.**

Books donated for club year 2010-2011 will be on display at the November General Meeting.



FORT BEND MASTER GARDENER

By Leslie Niemand

Thursday, **November 17, 2011.**

Native American Gifts to the World

By Dr. Robert Pierce

6:30 p.m. Social Time; 7:00 p.m. Program

Bud O'Shieles Community Center
1330 Band Road, Rosenberg, 77471

There will be no December Master Gardener meeting.



Don's Bug Corner

Sugar Land Garden Club member Don Johnson, an occasional contributor to the Greenleaf writing on garden insects, is a member of the Fort Bend County Master Gardeners' Entomology Group and gives talks on insects. He is also a member of the local Coastal Prairie Chapter of the Texas Master Naturalists.

BUTTERFLY DRUG STORE

By Don Johnson

The October issue of Popular Science has a section devoted to the ten most brilliant researchers. One of them is about an Emory University biologist, Jaap de Roode, whose work is on monarchs and their ability to self-medicate.

A parasite that infects some monarchs will cause the emerging butterfly to leak fluids and to not form properly; or a butterfly that does emerge with the parasite will not live as long. The researcher wanted to know why some female monarchs infected with the parasite produced healthy offspring while others produced infected caterpillars.

The plants that the monarch caterpillar eats are from the genus *Asclepias*, a name which comes from Aeskulap, the Greek god of medicine and healing. Interestingly, some of these milkweed plants are toxic to vertebrates and yet are associated with medicine and healing. There are approximately 110 species of milkweed in North America. Most contain a toxin called cardenolide. The amount of the toxin varies from a little to a large enough amount that according to a researcher may be toxic even to the monarch. Researchers have identified 27 different cardenolides with varying degrees of toxicity.

When the monarch caterpillar ingests the milky substance in the plant, it will make the caterpillar and the adult butterfly toxic to some predators. The toxin appears to be harmless to bees and butterflies, which feed on the nectar of the milkweed flower, and to the lady beetle that eats the aphids which are feeding on the milkweed.

Insects can smell some plant odors that people cannot. The monarch is able to find the milkweed by its odor and then makes its selection by tasting the plant with its feet.

What de Roode observed was that many infected female monarchs chose to lay their eggs on milkweeds containing higher amounts of toxins that would kill the parasite in its offspring. Somehow the female knew that she was infected and would pass that on, and when given a choice of milkweeds, she chose the one with enough toxins to be beneficial to her babies while not helping her. No preference of milkweed was shown by uninfected monarchs. In an email from Professor de Roode he stated that one plant species that medicated the monarch was the *Asclepias curassavica*, a species which is sold in most of our local plant sales.

<http://shared.web.emory.edu/emory/news/releases/2011/09/emory-biologist-among-popular-sciences-brilliant-10.html>



Mexican Milkweed (*Asclepias curassavica*). Photo by Don Johnson

Calendar of Events

Unless otherwise stated, all events are open to the public.

SLGC General Meeting

Tuesday, November 15
Social 9:30 a.m.; program 10:00 a.m.
How to Create an Oriental Garden by Keiji Asakura, of
Asakura Robinson Company, a landscape architecture
firm
Knights of Columbus Hall, 702 Burney Road 77498

Keep Sugar Land Beautiful Recycles Day

Tuesday, November 15, 11:00 a.m. . 2:00 p.m.
Whole Foods Market, Sugar Land
Bring your recycling questions & gently used book
donations for the Literacy Council of Fort Bend County
(See p. 5)

SLGC Butterfly Garden Workday

Thursday, November 17, 8:00 a.m.
Sugar Land Branch Library, 550 Eldridge 77478
For more information, contact Evelyn Coe

Fort Bend Master Gardeners

Thursday, November 17, 7:00 p.m.,
Native American Gifts to the World
Dr. Robert Pierce
Bud O'Shieles Community Center
1330 Band Road, Rosenberg 77471

Native Plant Society of Texas - Houston

Thursday, November 17, 7:15 p.m.
Plant & Seed Swap/Potluck . see box on this page.
The public is invited. Attendees need not bring anything in
order to take plants or seeds home. Please bring a potluck
dish to share, if possible. Free & open to the public.
Houston Arboretum & Nature Center
4501 Woodway in Memorial Park 77024

SLGC Fieldtrip

Tuesday, November 22
For carpool, meet at 7:30 a.m. & depart at 7:45 a.m. from
Knights of Columbus Hall, 702 Burney Road 77498
Trip to Katy Prairie Conservancy field office (See p. 2)

SLGC Brookwood Community Garden Therapy Workday

Thursday, December 1 (See p. 4)
Depart Sugar Land at 9:30 a.m., Knights of Columbus Hall,
702 Burney Road 77498
Work from 10:30 a.m. . 2:30 p.m. with 30 min. lunch.

Houston Federation of Garden Clubs

Friday, December 9, 9:30 a.m.,
Holiday Luncheon and Fundraiser: *The Fifth Day of
Christmas* by Jere Pfister
Houston Garden Center, 1500 Hermann Dr. 77004

SLGC Christmas Party Luncheon

Tuesday, December 13, 11:00 a.m. . 1:00 p.m.
Knights of Columbus Hall, 702 Burney Road 77498
Sign up at the November meeting (See p. 1)

Houston Federation of Garden Clubs

Friday, January 13, 9:30 a.m.,
Famous Trees of Texas: Big, Bold, and Beautiful by Pete
Smith
Houston Garden Center, 1500 Hermann Dr. 77004

SLGC General Meeting

Tuesday, January 17
Social 9:30 a.m.; program 10:00 a.m.
Best Roses for Houston by Donald Burger, Houston
attorney, former president of the Houston Rose Society,
& author of the famous www.burger.com website.
Knights of Columbus Hall, 702 Burney Road 77498

Farmers Market At Imperial (See p. 5)

Saturdays, 9:00 a.m. to 1:00 p.m.
198 Kempner St., Sugar Land 77498

Urban Harvest Farmers' Market at Sugar Land Town Square

Thursdays, 4:00 p.m. to 7:00 p.m.
2711 Town Center Boulevard North, Sugar Land

Sugar Land Heritage Hike (See p. 5)

Saturdays
Hikes start at 198 Kempner St., Sugar Land 77498
For tour reservations, contact Eleanor Barton at 281-494-
0261



The Native Plant Society of Texas - Houston's Annual Plant & Seed

Swap/Potluck will be on Thursday, November
17, at the Houston Arboretum. This event,
free and open to the public, is a great
opportunity to acquire some plants or seeds for your
garden and bring some of yours for others. It is also a
learning experience as you will be able to see many plants
identified, which is so much better than a drawing or even
a photograph. **If you don't have any native plants or
seeds to share, come anyway. There will be plenty.**

If you would like to join our potluck, please bring a dish to
share.

Photos of a beautiful and rare [prairie remnant](#) in Deer Park
and [artistic photos](#) of the plants growing and blooming
there on rainfall only are posted at the [Coastal Prairie
Partnership Website](#). (See also information about the
[Prairie Conference](#) on November 18-19.) Anyone
interested in rescuing some of these soon to be bulldozed
plants for his/her own garden or for prairie restoration,
please contact Lan Shen.