



Greenleaf

Volume 14 Issue 6

February, 2012

PRESIDENT'S MESSAGE

Have you ever wanted to have your own beautiful Thomas Kinkadee garden in your backyard? Visualize flowering ornamental trees of all colors creating an artistic backdrop for your bright perennials and annuals. We only need to choose the right trees and this garden of light can be ours. Learn about growing these gorgeous works of art by joining us at our February 21 general meeting and enjoying Linda Gay's presentation on "Small and Ornamental Trees for the Houston Area." There are many more flowering trees choose from than crepe myrtles.



*Evening at
Swanbrooke
Cottage,
Thomashire*

by Thomas
Kinkadee

The garden club always has one exciting activity after another.

But you must sign up for all events in advance at the general meeting. This includes all field trips, workshops and social activities. These reservations are important so that we can plan appropriately.

On Tuesday, February 28, we will travel to Galveston for a memorable field trip. First will be a well-guided tour of the newly renovated Moody Gardens. Then we lunch at the Moody Gardens Hotel followed by shopping at the always interesting [Tom's Thumb Nursery](#) on 45th Street. We will carpool from our usual meeting place at the Knights of Columbus Hall.

Our Brookwood Community garden therapy workdays provide a great opportunity for us to use our gardening skills for the good of the community. The next workday is Thursday, March 1. Space is limited, so sign up at the February general meeting.

The following Tuesday, March 6, brings the long-awaited wine cork birdhouse workshop. These birdhouses are just adorable and they make a cute addition to your back patio or sunroom. The workshop will be held at the Eldridge Park Community Center.

Continued on column 2



FIELD TRIP

By Mary Bates

Join us for a tour of [Moody Garden's](#) Rainforest Pyramid and greenhouses on Tuesday, February 28. The original landscape architect will be guiding us through the older areas and the recently finished areas after their \$26 million dollar renovation following Hurricane Ike.

You will see the chocolate tree, windowpane palm, and many rare plants. Keep your eyes open for the South American monkeys, [loris](#) and bats. Experience life in the canopies of the jungles.

Lunch will be served in the lovely Terrace Restaurant located in the Moody Gardens hotel. Offered on the menu are their delicious lobster bisque, crab and shrimp stuffed avocado salad, and the best gumbo in town.

After lunch, we will go to Tom's Thumb Nursery, which has an array of palms, hibiscuses, oleanders and other fine tropical plants.

Make sure that you sign up for the trip on Tuesday, February 21, during the general meeting. For carpooling, we will meet at the Knights of Columbus Hall at 8:15 a.m. and leave at 8:30 a.m. Cost is \$15. If you have any questions, call Mary Bates at 281-565-0201 or 979-255-0350 (cell).

Continued from column 1:

And don't forget to support our garden club sponsors! No matter what the groundhog said, it's spring time here and exciting new plants are showing up at our favorite independent nurseries. Enchanted Forest and Enchanted Gardens have released their spring schedule of seminars and it is full of goodies that you will want to attend. Check out their website at www.myenchanted.com for the new calendar.

Happy gardening!
Terri

2011-2012 Club Officers

President	Terri Hurley
1 st vice president <i>Programs</i>	Kathy Hradecky
2 nd vice president <i>Membership</i>	Elisabeth Jones Carrie Sample Emilie Wilson
Recording Secretary	Sherrie Strickland
Treasurer	Deborah Birge
Parliamentarian	Mary Ellen Twiss



Dues for SLGC are payable each spring, \$30 for the following year. New members joining June 1 - December 31 shall pay \$30 for the current year. New members joining January 1 - March 31 shall pay \$20 for the current year. For new members joining in April, dues are \$30 and apply to the following garden club year. Each member receives a monthly newsletter and copy of the club yearbook.



The Sugar Land Garden Club of Sugar Land, Texas, publishes the Greenleaf Newsletter monthly except June, July, & December.

Editors
Lan Shen
Jennifer Washam

DEADLINE IS THE SECOND TUESDAY OF PUBLICATION MONTH

Contact for articles and contributions:
Shen.gcmn@gmail.com or 713-771-1415

LIBRARY DONATIONS

By Kathy Hradecky

Sugar Land Garden Club purchases and donates gardening, birding, and nature books for the Fort Bend County Library System, to be shelved at the Sugar Land Branch Library. This year we will **emphasize** children's books. If you have any titles (adult or children) to suggest, please send them to Kathy Hradecky (kathy-fh@comcast.net) or Lan Shen (shen.gcmn@gmail.com). **We would like to make our purchases by March of 2012, so please get your suggestions in as soon as possible.**



WELCOME BACK, LINDA GAY!

By Kathy Hradecky

The SLGC is thrilled to welcome Linda Gay as **our February 21 featured speaker**. It has been our good fortune to have Linda as a speaker previously. This month she will enlighten us about **"Small and Ornamental Trees for the Houston Area."**

Linda is the former horticulturist and long time director of Mercer Arboretum and Botanic Gardens. She is originally from Louisiana and earned her horticulture degree in Charleston, South Carolina. However, Linda has been in the Houston area since 1979. She was one of the original 20 people hired at the 14.5 acre Mercer Arboretum (now 325 acres), where she was on the team that built the trails and gardens.

Currently, Linda is on the staff at Arbor Gate Nursery where she does a little bit of everything. If you visit Arbor Gate, you might find her creating new landscapes at the nursery, giving a plant related lecture, converting the rose house to a lecture room, or just simply helping customers. If you have a minute, go to Arbor Gate's website www.arbortgate.com, and you may find one of Linda's articles or classes to attend.

Anyone with an interest in gardening is invited to attend SLGC meetings held at the Knights of Columbus Hall, 702 Burney Road 77498. Social begins at 9:30 a.m. and the program starts at 10:00 a.m.

March 20 – Flora Designs With Anu!

On March 20, Anu Rao will demonstrate how we can recycle and transform ordinary household objects and containers into beautiful spring floral creations.



Anu is an award winning floral designer who currently works for Village Greenery and Flowers in the Rice Village area. Anu was born and raised in India where she received a Masters in the History of Fine Arts. She came to the US in 1977 and shortly thereafter participated in some floral design workshops. In her first flower show with the Houston Federation, she won in seven out of nine categories. She has won the "People's Choice Best of the Show" award at the Texas Home and Garden Show at the George Brown Convention Center. Her own personal garden has been featured on the Texas Garden Clubs State Convention's "Secret Garden Tour." She has studied the work of Bob Thomas and Jim Johnson and is a frequent winner of Houston Federation flower shows.

Any Suggestions for Next Year's Speakers?

The SLGC is known for the expertise and variety of speakers at our general meetings. If you have a suggestion for next year's speakers for the meetings, please contact Kathy Hradecky at kathy-fh@comcast.net. We appreciate your input!



HORTICULTURE

By Paula Goodwin

Seeds are magical. My collections roll around in the edges of my kitchen drawers, I scoop them up out of the bottom of my purse, they are stacked in envelopes in shoeboxes, and they rattle around in my coat pockets and my truck console. Most are labeled, some are also dated, but some are mysteries. I can always recognize okra (big and round and I still find them in my floorboards) and four o'clocks (can be used as grenades for little toy green army men). You, too, can gather seeds from your own garden, from our garden club plant exchanges, from vacation trips and from your neighbors' yards--with their permission, of course. One of the many tips from my Master Gardeners' class was how to prepare seeds for planting: pour boiling water over them and soak overnight. If these seeds do not sprout, they will likely not be viable. Be generous with other gardeners because in the event you lose that plant, you will know who to go to for seeds or cuttings for a re-start.

Now is the time to start seeds inside upon your windowsill, under plant lights, or outside in your flowerbeds. Watch out for our aberrant weather, though. Seeds are the way to go when you need annuals in your beds. Annuals will bloom and bloom all season long. Some need to be dead-headed, but that is OK for cutting flowers. Plant these in an out-of-the-way place or in the back of your beds. Zinnias come to mind—not just because these were my grandfather's favorite flowers, but because they make outstanding, colorful, and long-lasting bouquets in your home. Seeds are available in stores now for this spring, but also buy any you may want for next fall. They simply are not offered in big box stores then.

Some gardeners have the touch to propagate with cuttings (Lan Shen) and some have luck with starting seeds (me). Learning to grow from seeds is easy and inexpensive. A gardener has many more selections with a package of seeds than one does from seedlings offered in a nursery. Nursery catalogs and the internet are great resources for out-of-the-ordinary, non-hybrid, and heirloom seeds.

I highly recommend planting leaf lettuces from seed or seedlings this time of year. Just never let the seeds totally dry out after planting. Hopefully, they will grow and mature before it gets too hot. They look lovely as the "filler" in your "thriller/filler/spiller" container. For those of you who are not familiar with this term for container growing, thriller means a tall, striking plant, filler means color and medium height, and the spiller is usually a sprawling flower or well-mannered vine. Radishes, too, grow well in a container almost all year and are fast growers.

Harvest leaf lettuce by using a pair of scissors and cutting the leaf about ¾ of the way down the leaf—do not pull the lettuce out by its root. That way the lettuce will continue to put out leaves. Harvest radishes when they begin to

Continued on column 2.



CRAFT WORKSHOP

By Brenda Webb

We have had a great year with our workshops, starting with Lynnette McQueen's guiding us to create an awesome Halloween candy jar, followed by Carolyn Salmon's lending her talents to help with decorating gorgeous carry-all tote bags, and Terri Hurley's "mixing it up" with those oh-so fragrant herbal bath salts.



Photo of Herbal Bath Salt Workshop by Tricia Bradbury who wrote, "...It was a very nice workshop Terri, thank you. I may be tempted to take baths just to try them all out"

We have two more workshops to complete the year. You may sign up for one or both workshops at the general meeting on February 21.



The first workshop - using **wine corks to decorate a birdhouse** - is scheduled for Tuesday, March 6, 10 a.m. - noon, at Eldridge Park Community Center.

The second workshop consists of two parts. On March 20 (after the general meeting), we will mix our concrete to make two concrete toadstools. This starts at 1 p.m. at Terri Hurley's home. We will take them out of the molds and decorate them on Tuesday, April 3, 10 a.m., again at Terri Hurley's home.

Look for the signup sheets and other information at the craft workshop table at the general meeting on February 21.

Continued from column 1:

"show their shoulders", which means you can see the top of the radish popping up through the soil. It is bliss to walk outside, even if you only have a patio garden, and gather leaf lettuce and radishes for a wonderfully fresh salad.

Wandering around on the internet sometimes brings up gardening, even though one is not looking for it. I was reading Poland by James Michener and searched the net for photographs of the castle featured in his novel. Lo and behold the castle is still there and has been restored. Also, and to my great pleasure, the castle Luncat also has an orchid house! The aristocratic Polish were great orchid collectors. If you have a few minutes, I recommend viewing this gorgeous slideshow even if you are not especially an orchid lover. Put the slideshow on full screen viewing and you will be blown away. My favorite was "Dracula"-- <http://www.zamek-lancut.pl/en/CastleToday/OrchidHouse>

GARDEN CLUB PERSONALITY

By Tricia Bradbury



I grew up in northeast Texas in a family that did not have a lot of time for gardening for pleasure. We grew a few edibles in our yard and bought peas and corn from local farmers. I shelled what seems like hundreds of bushels of peas and my fingers were usually stained purple for a good part of each summer (purple hulls were our favorite). My dad grew up on a small farm and took my sister and me berry picking on the family property each year. He told us about all the different plants we saw as we walked along and also told stories of the work he did on the farm when he was a boy. Daddy also described the animals we saw or explained which animals inhabited some of the burrows and nests we encountered. All those tidbits of knowledge made an impression on me, but it took many years before I had the time to continue my learning about the environment.

I saw a notice of a garden club meeting in a local paper shortly after moving to Sugar Land in 1990 with my husband, Tim, and our cats. When I whittled my pharmacy work schedule down to part-time, I was finally able to attend meetings and joined the club in 1994. My first job in the club was writing a monthly horticulture article. I've also served as 2nd VP and several chair positions. I served as president 1998-2001. I'm proud and honored that GAPS and Garden Tour began during my time as president. The butterfly garden at the Sugar Land Branch Library was also installed. I'm certainly not saying I did any of this myself—we had a supportive board and great members who stepped up to the jobs and coordinated things to make it all happen!! I'm honored that my garden has been featured on three of our tours—2000, 2004, & 2009. I considered it an opportunity to educate the public—my garden is certified as a Texas Parks & Wildlife Wildscape; National Wildlife Federation Backyard Habitat; and Monarch Watch Monarch Waystation.

When I was not quite so busy with garden club, I continued learning about nature and gardening by completing Texas Master Naturalists training in 2004 and Master Gardener training in 2005. I'm also a member of the Native Plant Society of Texas-Houston and a board member for Keep Sugar Land Beautiful.

I have enjoyed so many things about the garden club through the years. Fieldtrips take us to places we may not get to see as one little gardener traveling around. Workshops pull a tiny shred of creativity out of me. Every Christmas season I proudly hang a wreath I made ages ago in one of our workshops. At last May's tea, I wore a hat I made a few years ago. A beaded garden stake adorns my herb bed. But the very best thing about the garden club is the people I've met and the friends I've made.



Brookwood Community

It's time to sign up for the next work day at Brookwood Community. Maximum of Six volunteers allowed. Space is limited so sign up quickly.



SAVE THE DATE
March 1, 2012

We will leave Sugar Land at 9:30. Lunch in the garden. Work day ends at 2:00 pm. If you would like to split a work shift, work just morning or just afternoon, please let me know. I will try to accommodate. Sign up sheet at the February Meeting

Click the Link Below to Take a Spring Video Tour

[Brookwood Video Tour](#)

Hope You Can Join Us,

Diana Miller 713-724-3113

dmiller@realtor.com

Click here on [Brookwood Video Tour](#) for a 1 minute video of Brookwood's spring offerings.

FORT BEND MASTER GARDENER

By Leslie Niemand



At the next Fort Bend Master Gardener meeting on Thursday, March 15, John Ferguson, owner of Nature's Way Resources, will speak on the soil food web and discuss types of composts and mulch for our area. Social time is 6:30 p.m. and the presentation begins at 7:00 p.m. The meeting is held at the Bud O'Shieles Community Center, 1330 Band Rd., Rosenberg.

March 10 is the FBMG Annual Spring Plant sale at the Fort Bend County Fairgrounds in Rosenberg from 9:00 a.m. until 1:00 p.m. [Information on the plants](#) to be sold will be available soon on the Master Gardener website, www.FBMG.com.

HOSPITALITY

By Jean Waleke

We want to thank **Carolyn Kendrick and Dianne Ozment** for volunteering to be Host Chairs for this month. They are responsible for arranging for our refreshments and meeting setup. We also want to thank all the members who signed up to co-host this month.



"At the Swap Table, January Meeting" by Kathy Hradecky and other photos submitted by Kathy and by Tricia Bradbury of the Craft Workshop have been posted at <https://picasaweb.google.com/mySLGCphotos/CurrentMonthSGreenleafPhotos#>.

To submit photos for posting, email them to Lan Shen.

COMMUNITY SERVICE

By Debe Fannin

Please stop by the Community Service table where Beth Phelps and Debe Fannin have free handouts about our service to **The Lighthouse for the Blind**. The handouts list which products have labels that you can save to raise money for the Lighthouse. If you normally buy these products, it is an easy way to help the visually impaired in our community.

The handouts can also be viewed on the last 3 pages of the online version of this newsletter.

SUGAR LAND EVENTS



FARMERS MARKET AT IMPERIAL, presented by the Fort Bend Chamber of Commerce, runs every Saturday from 9:00 a.m. to 1:00 p.m., rain or shine, at 198 Kempner St. (just north of Highway 90 and Brooks Street).

In addition to fresh food, Enchanted Gardens nursery professionals will be on hand to answer landscaping questions. Live music, cooking demonstrations, children's activities and more are planned at this festival of food and fun.

SUGAR LAND HERITAGE HIKE. The [Sugar Land Heritage Foundation](#) presents a monthly [Heritage Hike](#) each **second Saturday of the month**. The walk is



about 1-1/2 miles and takes one and one-half hours. Costs are \$10 for adults, \$5 for teens, and free for children under 12. The Heritage Foundation is a 501(c)3 organization. For tour reservations, contact Eleanor Barton at 281-494-0261. For information on special group tours, which may be scheduled during the week, contact Marsha Smith at 281-491-1621 or msmith@hal-pc.org. (Apologies for mistakes on Marsha Smith's email address in the previous two issues of the Greenleaf.)



URBAN HARVEST FARMERS' MARKET at Sugar Land Town Square. **Thursdays, 4:00 p.m. to 7:00 p.m.** at 2711 Town Center Boulevard North.

ECO CORNER

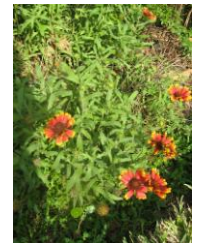
By Lan Shen

After two winters with deep freezes followed by one summer of unusual heat and drought, gardeners might think of buying native plants this spring to replenish their flower beds. Native plants do not need to be covered in winter. Once established, they do not need to be watered in summer, under normal circumstances. During a severe drought, they would fare better with occasional deep watering, but most will survive on rainfall only.

Early last September, long before the extreme drought and heat of Summer 2011 had been broken by fall rains, the native prairie wildflowers were not only surviving, but blooming. Harris County rain gauge showed prairie remnants in and near Deer Park received only 6.2 inches of rain between March and our visit. And yet, blooming prettily were Brown-eye Susans, butterfly gaura, native milkweeds, native ruellia, and many more. Click this link for [photos](#) of these blooms posted on Coastal Prairie Partnership website, www.coastalprairiepartnership.org.

At home, I had coralberry (*Symphoricarpos orbiculatus*) in the ground that received no water other than rainfall and coralberry in a gallon pot that was watered manually. Both survived. However, the one in the ground does not have berries now, because it was too dry in early summer when coralberries normally bloom. The coralberry in the pot received sufficient water to bloom and now has berries (left).

To those who are wondering why many native trees died this summer, the answer is most of this area was naturally coastal prairie and not forest. Trees only grew near water sources such as along the bayou.



Also shown above are two other natives providing color in the garden now: Carolina jessamine, an evergreen vine (center), and Indian blanket (right).

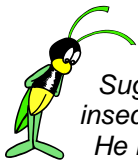
The Native Plant Society of Texas website has some interesting, short articles on [how native plants survive the drought](#), the [Mexican Plum](#) (a wonderful small tree), and [Create a Low-Maintenance Landscape](#).



BUTTERFLY GARDEN

By Evelyn Coe

The Sugar Land Garden Club planted and maintains the butterfly garden at the Sugar Land Branch Library at 550 Eldridge Road. Please consider joining the fun one or two times this year. The weeding, pruning, and planting take about one hour once a month. **The next butterfly garden workday is Thursday, February 23** at 8:00 a.m. For more information, contact Evelyn Coe at evelyncoe@earthlink.net or 281-565-9813.



Don's Bug Corner

Sugar Land Garden Club member Don Johnson, an occasional contributor to the Greenleaf writing on garden insects, is a member of the Fort Bend County Master Gardeners' Entomology Group and gives talks on insects. He is also a member of the local Coastal Prairie Chapter of the Texas Master Naturalists.

MOTHS – FRIEND OR FOE?

By Don Johnson

Butterflies and moths belong to the same insect order, but butterflies are the ones that gardeners often want to attract and moths are generally what they want to attack. Gardeners and schools frequently include the host and nectar plants needed to attract butterflies. We sometimes unintentionally include the plants that moths like, and then we consider them pests when they arrive. Gardeners are willing to accept some plant damage to get butterflies, but not so eager to accept the damage from moths.

A common vegetable included in home gardens is the tomato. Sphinx moths lay eggs on the plant so the **tomato hornworm**, the caterpillar of the sphinx moth, will have something to eat. The hornworm is a large green caterpillar which can devour the tomato plant. It blends in with the foliage so it is difficult to find until it has done damage. A caterpillar with small white objects on its back has been parasitized by a small wasp, and will no longer be a threat. The white objects are the pupae of a small wasp whose larvae have essentially eaten the inside of the caterpillar and the adult wasp will emerge from that casing to hunt for other caterpillars.



Gardeners also plant squash, but the beautiful moth that lays her eggs on the plants is the **squash vine borer** adult. After she lays the eggs, the worm-like caterpillars eat into the vine and can destroy the plant.

The **bagworm** overwinters in a small two inch bag-like sack on evergreen trees such as arborvitae and juniper. The wingless female moth may lay a few hundred eggs which, when they hatch, will make bags of their own and can defoliate a tree.



The unsightly fall webworm is the caterpillar of a moth which creates a large web around the tree's leaves. Years ago I heard a lecturer suggest breaking a hole in the web to allow wasps to enter so they will clean up the web. After finding a web in our front tree, I can confirmed that the method works.

The adult hummingbird moth is one moth that I like to see in my yard. It flies in the evening and looks like a hummingbird. Like the hummingbird it feeds on nectar plants and flies around the yard very quickly.

Even though moths are pollinators and food for other animals, they do not usually hold the attraction that butterflies do. With an exception of the silk worm, which is a moth larva, moth larvae generally are considered pests. I will continue to include plants in my yard that attract moths, but limit the damage to the amount I consider acceptable in my garden.



Photos on this page by Don Johnson

Calendar of Events

SLGC General Meeting

Tuesday, February 21,
Social 9:30 a.m.; program 10:00 a.m.
Small and Ornamental Trees for the Houston Area by
Linda Gay, former director and horticulturist of
Mercer Arboretum and Botanic Gardens.
Knights of Columbus Hall, 702 Burney Road 77498

SLGC Butterfly Garden Workday

Thursday, February 23, 8:00 a.m.
Sugar Land Branch Library, 550 Eldridge 77478
For more information, contact Evelyn Coe

SLGC Fieldtrip to Moody Gardens, Galveston & Tom's Thumb Nursery

Tuesday, February 28 (See page 1)
Meet at 8:15 a.m. for carpooling at Knights of
Columbus Hall, 702 Burney Road 77498.
Leave at 8:30 a.m.

SLGC Brookwood Community Garden Therapy Workday

Thursday, March 1 (See page 4)
Depart Sugar Land at 9:30 a.m., Knights of Columbus
Hall, 702 Burney Road 77498.
Workday ends at 2:00 p.m.
Maximum of 6 volunteers.

SLGC Workshop

Tuesday, March 6, 10:00 a.m. to 12:00 p.m.
Decorative Winecork Birdhouse by Brenda Webb
[Eldridge Park](#) Community Center, Meeting Room
2511 Eldridge Road, Sugar Land, TX 77478
See page 3.

Houston Federation of Garden Clubs

Friday, March 9, 9:30 a.m.,
*An Eye on the Garden – From Ancient Times to the
Future*, by Dr. Stewart Zuckerbrod
Houston Garden Center, 1500 Hermann Dr. 77004

Fort Bend Master Gardeners

Spring Plant Sale
Saturday, March 10, 9:00 a.m. – 1:00 p.m.
Fort Bend County Fairgrounds
4310 Highway 36, Rosenberg

Sugar Land Heritage Hike (See p. 5)

Saturday, March 10
Meet at 198 Kempner St., Sugar Land 77498

Fort Bend Master Gardeners

Thursday, March 15, 7:00 p.m. – 8:00 p.m., program
Soil, Compost, & Mulch by John Ferguson of Nature's
Way Resources
Bud O'Shieles Community Center
1330 Band Road, Rosenberg 77471

Native Plant Society of Texas - Houston

Thursday, March 15, 7:15 p.m.,
Free and open to the public.
Houston Arboretum & Nature Center
4501 Woodway in Memorial Park 77024

SLGC General Meeting

Tuesday, March 20,
Social 9:30 a.m.; program 10:00 a.m.
Floral Splendor from Your Everyday Thing by Anu Rao
Knights of Columbus Hall, 702 Burney Road 77498

Farmers Market At Imperial (See p. 5)

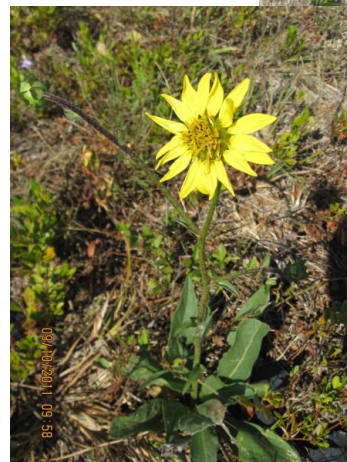
Saturdays, 9:00 a.m. to 1:00 p.m.
198 Kempner St., Sugar Land 77498

SLGC Workshop

Tuesday, March 20, 1:00 p.m. to 3:00 p.m.
Toadstool Yard Art. Part 1 by Brenda Webb
At Terri Hurley's house. Part 2 will be on April 3.
See page 3.

NATIVE WILDFLOWERS AT PRAIRIE REMNANT

Blooming in the Drought of 2011





THE LIGHTHOUSE OF HOUSTON

Campbell's



ARTS • ATHLETICS • ACADEMICS

Campbell's labels for education program has been supporting schools and awarding free educational equipment to schools in exchange of proofs of purchase from the Campbell family of brands for over 30 years. Labels for Education Program offer two ways for you to support the Lighthouse of Houston.

1. Clip and Save Method

1-POINT VALUE



5-POINT VALUE



Clip and save UPC'S. Separate the following groups:

- a. UPC's worth 1 point each
- b. UPC's worth 5 points each
- c. Beverage caps worth 1 point each
- d. Bonus Certificates.

LABELS

ARTS • ATHLETICS • ACADEMICS

Help Our School Get Free Stuff By Saving
UPC's From The Campbell Brands Below!

Products Worth 5 Points



||| - UPC CODE
Campbell's Soups (microwavable bowls)
Campbell's Condensed 10 to 11 oz. Soups
(Specially marked packages only)



||| - UPC CODE
Campbell's Chunky Soups (microwavable bowls)
Campbell's Chunky Chili (microwavable bowls)



||| - UPC CODE
All Campbell's Soup At Hand



||| - UPC CODE
SpaghettiO's Original Pasta (15 oz.)
SpaghettiO's Meatball Pasta (14.75 oz.)
(Specially Marked Packages Only)



||| - UPC CODE
All V8 Soups



||| - UPC CODE
All Campbell's Select Harvest Soups

Products Worth 1 Point



||| - UPC CODE
Campbell's Beans Products
Campbell's Condensed 10 oz. Soups
Campbell's Condensed 26 oz. Soups
Campbell's Low Sodium Soups
Campbell's Fat Free Soups
Campbell's Kitchen Classic Soups
Campbell's Tomato Juices
Campbell's Gravies
Campbell's Soup & Recipe Mix



||| - UPC CODE
Campbell's Chunky Soups
Campbell's Chunky Chili
Campbell's Chunky Fully Loaded Soups



||| - UPC CODE
Campbell's Healthy Request Soups



||| - UPC CODE
Prego Italian Sauces



||| - UPC CODE
Franco-American Gravies



GOOD IS IN THE DETAILS:

||| - UPC CODE
Pepperidge Farm Breads, Croutons, Rolls & Stuffing
Pepperidge Farm Goldfish Crackers & Grahams
Pepperidge Farm Baked Naturals
Pepperidge Farm Frozen Garlic Breads, 3-Layer
Cakes, Turnovers and Puff Pastry



||| - UPC CODE
Swanson Broth (can and carton)
Swanson Canned Chicken
Swanson Cooking Stock (carton)



||| - UPC CODE
SpaghettiO's Original Pasta (7.5 oz., 26 oz.)
SpaghettiO's Meatball Pasta (7.5 oz., 26.25 oz.)



● - CAP
All V8 Splash Juice Drinks
All V8 Splash Smoothies



● - CAP
All V8 100% Vegetable Juice



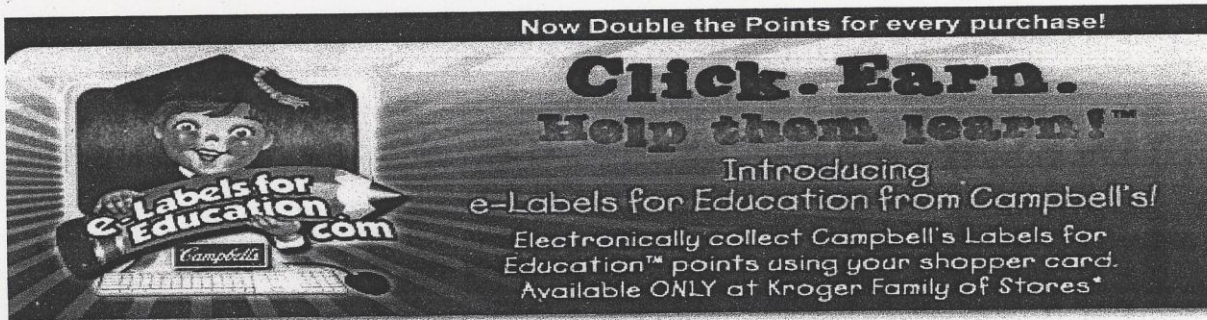
● - CAP
All V8 V-Fusion 100% Juice



- 2 CODE NUMBERS FROM
OUTER CASE
Campbell's Tomato Juice (11.5 oz./24 cans/case)
Campbell's Tomato Juice (5.5 oz./48 cans/case)
Campbell's Chef's Kettle Soups (50 oz.)
Campbell's Foodservice Soups (50 oz.)
Campbell's Low Sodium Soups (50 oz.)
Campbell's Healthy Request Soups (50 oz.)
All Pepperidge Farm Products
V8, V8 Splash, V8 V-Fusion
Prego Foodservice

2. Click. Earn. Method

Now Double the Points for every purchase!



Click. Earn.
Help them learn!™

Introducing
e-Labels for Education from Campbell's!

Electronically collect Campbell's Labels for Education™ points using your shopper card.
Available ONLY at Kroger Family of Stores*

Campbell has partnered with the Kroger Family of stores to launch an electronic version Campbell's Labels for Education. Sign up online by entering your Shopper Card number and every time you purchase participating Labels for Education items; The Lighthouse of Houston will automatically receive 1 point for each of item purchased.

Here's how it works:

1. **Click.** Go to www.elabelsforeducation.com to register. Set up and account by entering your Shopper Card Number in addition to answering a few simple questions. Then choose which school(s) will receive your points.
2. **Earn.** Now every time you shop at the Kroger family of stores and purchase any participating Labels for Education products, total points earned will be credited to The Lighthouse of Houston's LFE account automatically.